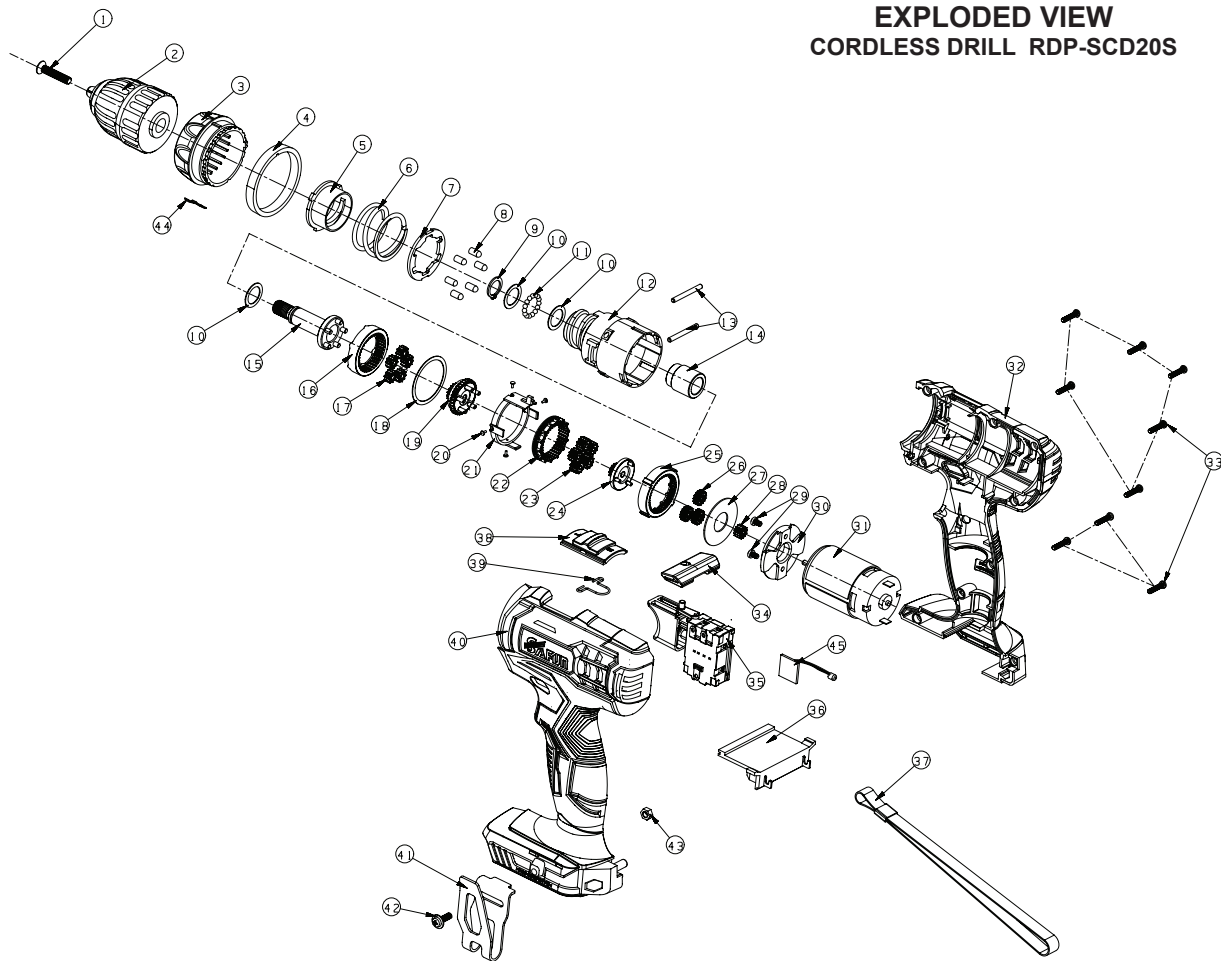


EXPLODED VIEW CORDLESS DRILL RDP-SCD20S



SPARE PARTS LIST

CORDLESS DRILL RDP-SCD20S

No.	Description	Specification	QTY
1	screw M5*25	M5 * 25 / Black nickel plating on the left tooth surface	1
2	chuck	SFZ303S / D / 1-10mm3 / 8 thread J1510J plastic shell straight pattern	1
3	torque cover	SFZ303S, PA6 + 30GF / black	1
4	torque range circle	Screen printing / 303S / foreign trade	1
5	adjusting cover	SFZ303 / PA66 + 30GF / Natural	1
6	torque spring	Φ2.8 * Φ34 * 20.5 / 344-8E10801	1
7	torque spring washer	Φ36.5 * 2 / 178-8E10802	1
8	fixing pin	SFZ303S / GCr15 4 * 8.7	6
9	circlip 906	Φ12 black zinc plated surface	1
10	ball washer	Φ17.5 * Φ12.5 * 0.5 / 178-8E10803	3
11	ball	∅Φ3.0mm / carbon steel	15
12	gear box housing	SFZ303S / PA66 + 30GF / Natural	1
13	gear ring fixing pin	Φ3 * 29.6	2
14	axle sleeve	SFZ303D / 195-8E10801	1
15	output shaft	SFZ303S / 40Cr / 334-8E10901	1
16	3rd inner gear ring	SFZ303S / 127-8E10903	1
17	3rd driven gear	SFZ303S / 359-8E10904	5
18	3rd inner gear ring washer	SFZ303S / φ29 × φ34 × 0.5 / 65Mn / Anti-rust	1
19	3rd driving gear	SFZ303S / 356-8E10902	1
20	location pin	SFZ303S / 232-8E10901	4
21	speed adjusting support	SFZ303S / PA66 + 30GF / Natural	1
22	Variable speed inner gear ring	SFZ303S / 127-8E10902	1
23	2nd driven gear	SFZ303S / 359-8E10903	5
24	2nd driving gear	SFZ303S / 356-8E10901	1
25	1st inner gear ring	SFZ303S / 127-8E10901	1
26	1st driven gear	SFZ303S / 359-8E10902	3
27	washer	Φ34 * Φ14 * 0.8 / 178-8E10804	1
28	gear	SFZ303S / M0.6Z13 / 359-8E10901	1
29	screw 3*5	3 * 5 cross semicircle white	2
30	gear box cover	SFZ303 / PA66 + 30GF / Natural	1
31	motor	SFZ303S, Hengli Model: HLRS550PH-6733-75L-18V-ROHS, n0: 20500rpm	1
32	right housing	SF8E123, PA6 + 30GF / 172C + TPE / black	1
33	screw PB3*14	PB3 * 14 / Pan head cross recessed flat tail tapping screw Black zinc plated surface	9
34	shift fork	303/304 / PA6 + 30GF / black	1
35	speed control switch	SF8E123 / JV08-1B / With cable without lamp	1
36	battery foot	SF8C203 / PA66 + 30GF / black / round hole pin piece	1
37	belt	200 * 11 / iron buckle / black	1
38	tap position rod	SFZ303S / PA66 + 30GF / black	1
T	rod spring	Φ1.0mm / SWP / piano steel wire	1
40	left housing	SF8E123, PA6 + 30GF / 172C + TPE / black, three front plate	1
41	belt fastener	65Mn	
42	screw PW4*12	PW4 * 12 large flat head cross recessed machine screw surface with white nickel plating	
43	nut M4	M4 hex nut with white nickel plating	
44	T spring piece	SFZ303S / 65Mn / Surface Black / H10024	1
45	LED light	SF8E123 / 18V / LED battery indicator (80mm)	1